

EyeC ProofRunner *Sheetfed* for Manroland Sheetfed



Meet the requirements of demanding customers and avoid reclamations

Ensuring the quality and conformity of printed materials is key for **pharmaceutical, cosmetic, toiletry and branded products**. The EyeC ProofRunner Sheetfed helps you prevent costly reprints or reclamations by **monitoring the quality of 100% of the production during printing and ensuring the fulfillment of customers' expectations**. It also provides a key sales argument to differentiate from the competition and win new business.

Reduce material waste and costs

The EyeC ProofRunner Sheetfed reduces costs associated to quality. By **catching defects in real time**, the system allows the operator to correct the problem before too many waste materials have been printed. By **counting the number of good items produced**, it also limits overprinting. As a result, it prevents the waste of expensive consumables and valuable machine time.

Generate added value to your sheetfed offset printing by **integrating 100% print inspection**

High speed AND high accuracy

Thanks to its **easy job set-up, high inspection speed and accurate defects detection**, the EyeC ProofRunner Sheetfed offers best-in-class performances. **Even if operated at maximum press speed, the system detects the relevant defects**. As a result, jobs are proofed and processed without slowing down production.

Ease-of-use

The **intuitive interface** of the EyeC ProofRunner Sheetfed allows any operator to **easily setup a new job and perform an inspection**. Thanks to its advanced technology, the system alerts the operator only in cases of significant deviations. The **clear presentation of deviations** helps to easily understand the location and origin of printing defects. A **full inspection report** offers managers perfect tracking, analysis and communication support.

EyeC ProofRunner *Sheetfed*

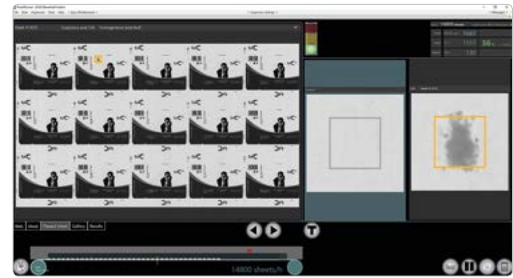
for Manroland Sheetfed

Key features

- ✔ **Highest performance**
Enables outstanding quality control at full speed.
- ✔ **100% job inspection**
Ensures quality and keeps customers satisfied.
- ✔ **Checks against step-and-repeat PDF**
Performs a comprehensive content verification in any languages and automates job set-up.
- ✔ **Automatic and easy job-setup***
The system is up and running without user intervention.
- ✔ **High and low priority regions**
Meets quality requirements, while limiting waste.
- ✔ **Predefined parameter sets to select tolerance**
Adapt the inspection sensitivity to each job with one click.
- ✔ **Activation of tab inserter or sheet ejector**
Enables an easy removal of defective sheets.
- ✔ **Running total of good and defective items**
Prevents under-delivering and limits overprinting.
- ✔ **Comprehensive inspection report**
Keeps track of inspection results and certifies quality.

Options

- ✔ **Checks against good-to-print PDF**
Ensures content conformity with approved artwork.
- ✔ **Sheet identification reporting**
Provides the identification number of defective sheets in the inspection report.
- ✔ **Integration of traffic light**
Delivers a visual and acoustic alert in case of defects.
- ✔ **Defects heatmap**
Displays the location of defects and defect clusters.



Technical data

EyeC ProofRunner Sheetfed					
	Version	ROLAND 700 DD	ROLAND 700 HiPrint	ROLAND 700 Evolution	ROLAND 900
Performance	Machine series**	from series 750	from series 752	from series 770	from series 946
	Inspection width	1,040 mm (41")			1,420 mm (56")
	Camera	4k color / 8k monochrome			
	Resolution	100 dpi / 200 dpi			75 dpi / 135 dpi
	Speed (sheets/h)	18,000			16,000
Features	Operating system	Windows based (64 bit). Windows 10.			
	Networking	1 GbE			

* Automatic job transfer from series 755

** Other series: technical clarification necessary

EN-19-0222 | These technical specifications are based on standard assumptions. All values provided are to our best knowledge at the time this sheet has been created and subject to change without further notice.